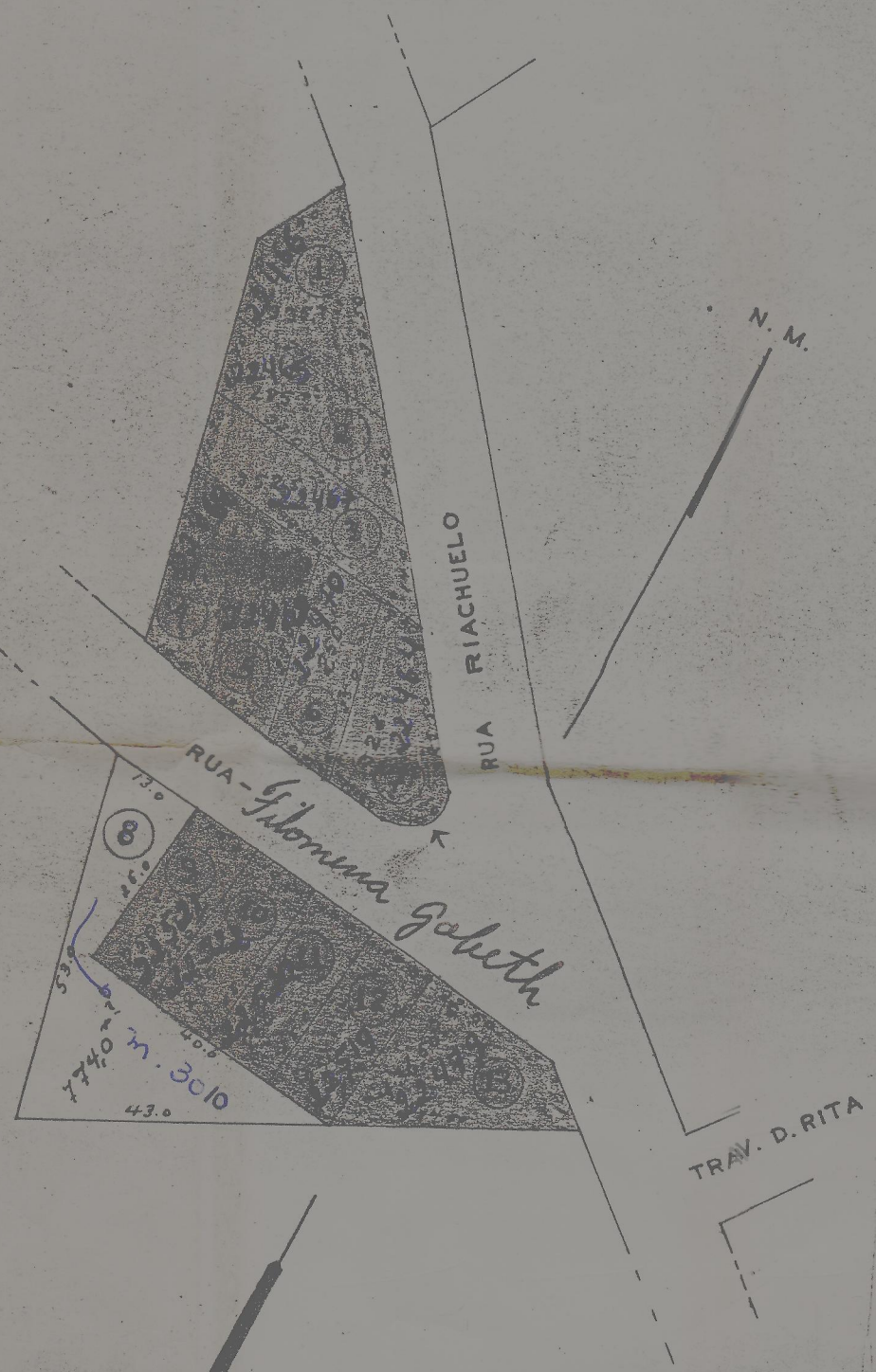


13 UU DO LOTEAMENTO DO IMOVEL PERTENCENTE A AR. LUIZ PERECIN  
 PROLONGAMENTO DA VILA DR. JORGE COURY

PIRACICABA

ESCALA-1:1.000



AREA DOS TES -	4.259 M <sup>2</sup>
AREA DASIAS -	3.170 M <sup>2</sup> - te. 22179
AREA TO -	7.429 M <sup>2</sup>

*[Handwritten signature]*

PREFEURA MUNICIPAL  
 DEPARTAMEIO DE OBRAS E VIAÇÃO

**APPROVADA**

PIRACICABA / 195 / 8

*[Handwritten signature]*  
 D.O.V.



Ar. 2.824 c  
16.474.